

FUSE

CATALOGUE



GRL

Since 1992, GRL Electric Co.,Ltd is a professional manufacturer specialized in fuse link、 busbar system、 low voltage switch disconnecter、 fuse switch、 knife switch developing & manufacturing.

low voltage busbar system、 switch disconnecter、 fuse link

GRL

Humanistic mission

Win-win with customer
Mutual progress for workers
Shareholder satisfaction
Society satisfaction

Industry mission

Based on the manufacturing and sales of isolation switch, busbar system, and fuses, we make a contribution to the safety, reliability and efficiency of the electrical industry, and assume social responsibilities.

Vision

To be a respected brand of electric connection system all over the world

Orientation

We are committed to serve medium-end and high-end clients who pursue high quality products and agile supply chain, as well as the challenging area with innovation

Fuse Selection Guide

The main function of fuse is to cut off the circuit in time when the circuit fails, so as to protect the discrete components or the whole circuit. The following are the relevant conditions that users need to consider when selecting fuse



Normal working conditions and installation conditions

Ambient air humidity: -5 °C to +40 °C

Altitude: ≤ 2000m

Atmospheric conditions: Humidity: The relative humidity of the air at the installation site does not exceed 50% when the maximum temperature is +40°C; higher relative humidity is allowed at lower temperatures, and the monthly average minimum humidity of the wettest month does not exceed +25°C, the monthly average maximum relative humidity of the month does not exceed 90%. Due to temperature changes

Measures must be taken when condensation occurs on the product.

Pollution level: III

Installation category: III

Environment temperature

Refers to the temperature of the air directly surrounding the fuse link and should not be confused with room temperature.

In many practical occasions, the temperature of the fuse-link is quite high. This is because the fuse-link is configured in the support/base of different structures and the entire fuse is enclosed in the power distribution/control cabinet.

Fuse Derating Guidelines

Fuse Current Rating Fuse Derating Factor

2 - 1.5 amps 0.50%

1 - 1.5 amps 0.45

0.5 - 0.75 amps 0.40

0.375 amps 0.35

0.25 amps 0.30

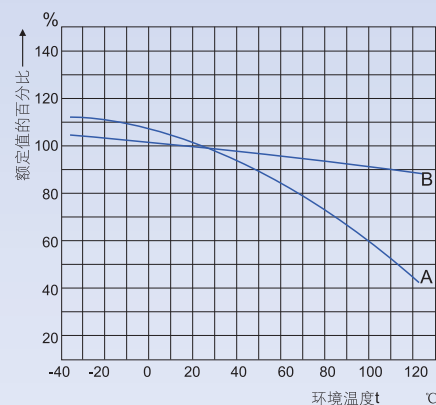
0.125 amps 0.25

Derate a fuse by multiplying the rated current by the derating factor.

Derate an additional 0.5%/C above 250C

Keep in mind that a fuse holder, if used should be derated as well. When selecting a fuse holder be sure that the holder can withstand the maximum fuse rating for voltage and current. The fuse holder could melt trying to with stand the power dissipated by the fuse before the fuse opens.

No derating data has been found for a Fuse Holder; How ever in many cases a connector is derated to 25% of its maximum Dielectric Withstanding Voltage. Or the dielectric should with stand Ambient Temp + Ohmic heating Temp + 50C



环境温度——承载能力曲线

Fuses are specified to interrupt within a maximum of 5 seconds when driven at 200% of their rated current for nominal ratings up to and including 10 amperes. A fuse with a nominal rating of 15 amperes is specified to interrupt within a maximum of 10 seconds when driven at 200% of its rated current.

The power supply shall be capable of delivering appropriate levels of current to achieve short fusing times. There is an additional derating of 0.2%/°C for an increase in the temperature of fuse body.

misoperation

Misoperation is often caused by incomplete analysis of the designed circuit. In the "factors to be considered in the selection of fuse links". We must pay attention to its Items 1), 3) and 6) including normal working current, ambient temperature and overload. For example, a common cause of misoperation during normal operation is that the starting current of motor circuit, surge current and harmonic current of capacitor circuit and air temperature around fuse link.

breaking capacity

It is the maximum allowable short-circuit current that the fuse link can fuse reliably under the rated voltage. In case of short circuit, much larger instantaneous current will pass through the fuse link than its normal operation. Safe operation requires that the fuse link cuts off the circuit in a complete state (no burst).

The breaking capacity of the GRL fuse link is up to 120ka. Reliable current limiting characteristics prevent the equipment in the electrical circuit from being damaged.

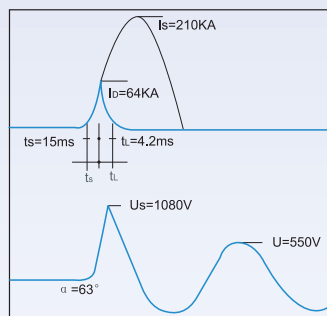
Waveform diagram

LS - Maximum asymmetric current peak with expected current I_p of 100kA (effective value).

(the impact coefficient in short circuit circuit is taken as 1.5)

ID-breaking current U_s -Arc voltage U -Supply voltage

t_s -Melting time t_l -Arcing time α -zero crossing angle



Fuse holder

In many practical applications, fuse links are installed on the fuse holder. They can not be used as switches - they are not used to turn on or cut off loads.

factors to be considered in the selection of fuse links

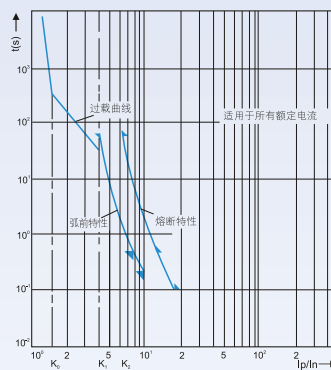
- * Rated current
- * Rated voltage
- * ambient temperature
- * fusing time fault current
- * impulse current, Surge current, harmonic current, Starting current, transient value
- * Structure size, wiring mode and visual indication

Fuse link for motor short circuit protection (aM)

Threshold of "aM" fuse link

I_p	T 熔断 \leq (s)	T 弧前 \geq (s)
4	-	60
6.3	60	-
8	-	0.5
10	-	0.2
12.5	0.5	-
19	0.10	-

注 : I_p -Expected current I_n -Rated current



Current band(aM)

CONTENTS



NT / NH Fuses Series

RT16(NT/NH) Fuse Links Series	1
DNRX1、 DNRX1D-1000 Fuse Alarm Impactor	4
DNRX2-1000 Fuse Alarm Impactor	5
DNF1 Fuse Holders Series	7
DNF2 Fuse Holders Series	15

Cylindrical Fuses Series

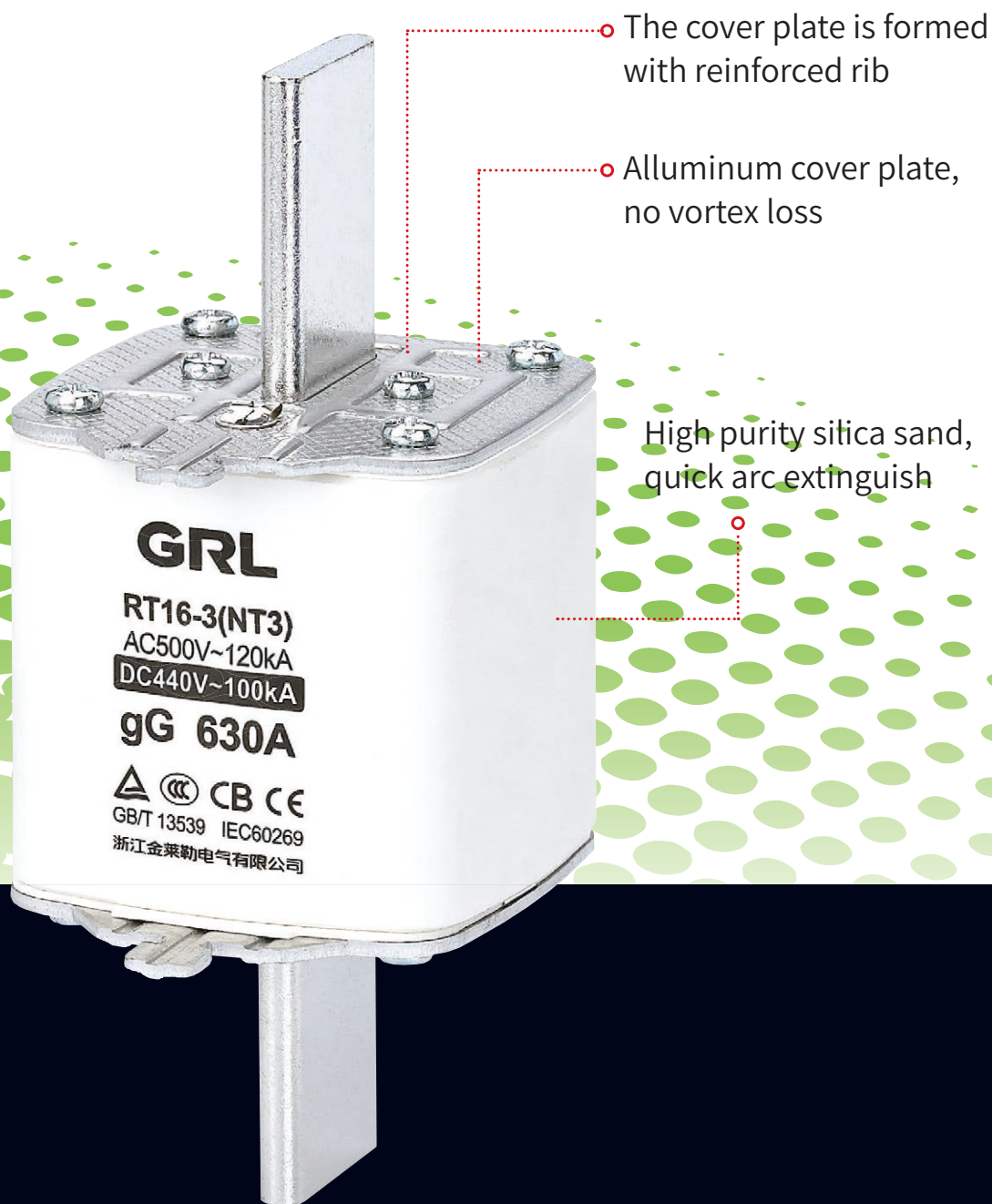
Cylindrical Fuse Links Series	17
RT18 Fuse Holders(Disconnectors) Series	20

PV(Photovoltaic) Fuses Series

PV(Photovoltaic) Fuse Links Series	26
DNPVF1 PV(Photovoltaic) Fuse Holders(Disconnectors) Series	30

RT16(NT/NH) Fuse

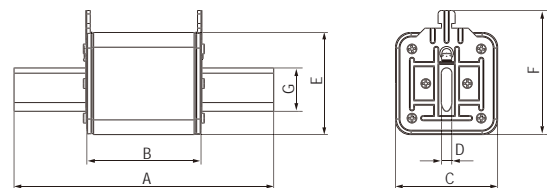
AC500V/AC690V/DC440
2A-630A



Fuse (with 1 indicator)



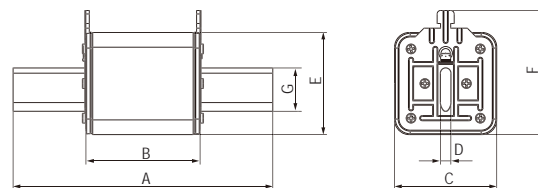
Item No.	Rated Current In	Rated Voltage Un	Breaking Capacity (with Fuse)	Overall Dimensions mm						
				A	B	C	D	E	F	G
RT16-00 (NT00/NH00)	In:2A, 4A, 6A, 8A, 10A, 12A, 16A, 20A, 25A, 32A, 40A, 50A, 63A, 80A, 100A, 125A, 160A(500VAC/250VDC);	500VAC 690VAC 250VDC	120kA(500VAC) 50kA(690VAC) 100kA(250VDC)	78±0.5	50	29	6	47	58	15
	In:2A, 4A, 6A, 8A, 10A, 12A, 16A, 20A, 25A, 32A, 40A, 50A, 63A, 80A, 100A(690VAC)									
RT16-1(NT1/NH1)	In:40A, 50A, 63A, 80A, 100A, 125A, 160A, 200A, 225A, 250A (500VAC/440VDC);	500VAC 690VAC 440VDC	120kA(500VAC) 50kA(690VAC) 100kA(440VDC)	134±0.5	66	46	6	46	60	20
	In:40A, 50A, 63A, 80A, 100A, 125A, 160A, 200A(690VAC)									
RT16-2(NT2/NH2)	In:80A, 100A, 125A, 160A, 200A, 250A, 315A, 350A, 400A(500VAC/440VDC);	500VAC 690VAC 440VDC	120kA(500VAC) 50kA(690VAC) 100kA(440VDC)	150±0.5	66	59	6	59	72	25
	In: 80A, 100A, 125A, 160A, 200A, 250A, 315A (690VAC)									
RT16-3(NT3/NH3)	In: 315A, 400A, 500A, 630A (500VAC/440VDC);	500VAC 690VAC 440VDC	120kA(500VAC) 50kA(690VAC) 100kA(440VDC)	150±0.5	66	68	6	68	83	32
	In: 315A, 400A, 500A(690VAC)									



Fuse (with double indicator)



Item No.	Rated Current In	Rated Voltage Un	Breaking Capacity (with Fuse)	Overall Dimensions mm						
				A	B	C	D	E	F	G
RT16-00 (NT00/NH00)	In:2A, 4A, 6A, 8A, 10A, 12A, 16A, 20A, 25A, 32A, 40A, 50A, 63A, 80A, 100A, 125A, 160A(500VAC/250VDC); In:2A, 4A, 6A, 8A, 10A, 12A, 16A, 20A, 25A, 32A, 40A, 50A, 63A, 80A, 100A(690VAC)	500VAC 690VAC 250VDC	120kA(500VAC) 50kA(690VAC) 100kA(250VDC)	78±0.5	50	29	6	47	58	15
RT16-1(NH1)	In:40A, 50A, 63A, 80A, 100A, 125A, 160A, 200A, 225A, 250A (500VAC/440VDC); In:40A, 50A, 63A, 80A, 100A, 125A, 160A, 200A(690VAC)	500VAC 690VAC 440VDC	120kA(500VAC) 50kA(690VAC) 100kA(440VDC)	134±0.5	66	46	6	46	60	20
RT16-2(NH2)	In:80A, 100A, 125A, 160A, 200A, 250A, 315A, 350A, 400A(500VAC/440VDC); In: 80A, 100A, 125A, 160A, 200A, 250A, 315A (690VAC)	500VAC 690VAC 440VDC	120kA(500VAC) 50kA(690VAC) 100kA(440VDC)	150±0.5	66	59	6	59	72	25
RT16-3(NH3)	In: 315A, 400A, 500A, 630A (500VAC/440VDC); In: 315A, 400A, 500A(690VAC)	500VAC 690VAC 440VDC	120kA(500VAC) 50kA(690VAC) 100kA(440VDC)	150±0.5	66	68	6	68	83	32



DNRX1

DNRX1D-1000

Fuse Alarm Impactor



Order No.:

Model No.:DNRX1、 DNRX1D-1000

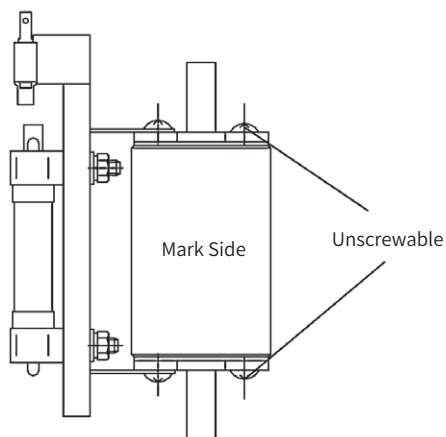
Name and Discription	Fuse Alarm Impactor
Rated voltage	AC1000V
Reference Standard	GB/T 13539

Product description

DNRX1, DNRX1D-1000 Fuse Alarm Impactor, rated voltage AC1000V, it can be directly connected to the fuse link in parallel. When the fuse link is blown, Fuse Alarm Impactor acts at the same time, pushing the micro switch, driving other auxiliary electrical appliances to work, to reminds the operation staff pay attention to it.

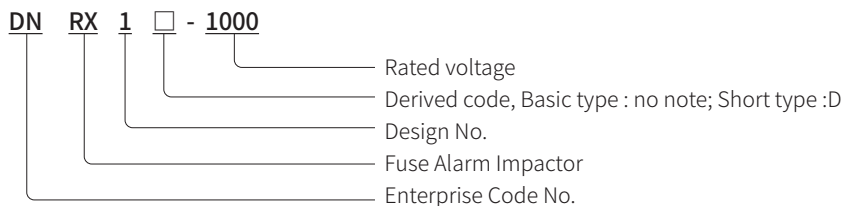
Installation

Fuse Alarm Impactor is installed in parallel with the fuse link. Adjust the Fuse Alarm Impactor connecting plate to the same height as the cover plates at both ends of the fuse link, loose the screws of the fuse link, insert the connecting plates into the cover plates, and then tight the screws, as shown in Figure.



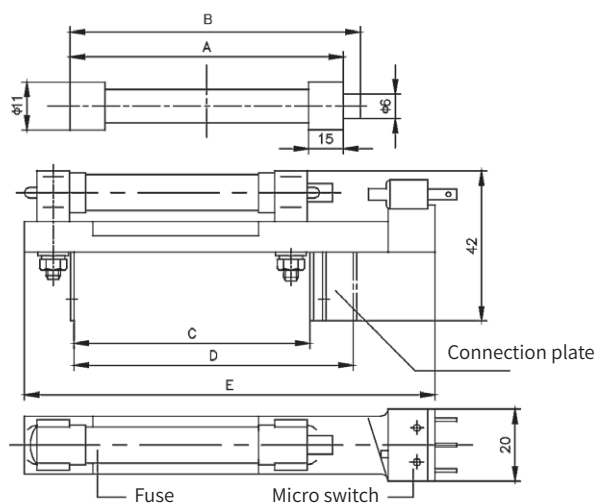
DNRX1-1000 Fuse Alarm Impactor must be installed on the left side

Model No. And Meaning



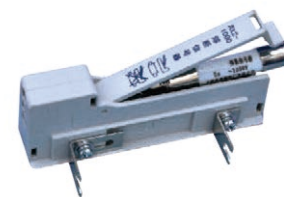
Model No.	Dimensions mm				
	A	B	C	D	E
DNRX1	80	88	65.5	77.5	114
DNRX1D	60	68	62.5	73.5	90

Note: C and D dimensions can be adjusted according to the actual height of the fuse link.



DNRX2-1000

Fuse Alarm Impactor



Order No.:
Model No.:DNRX2-1000

Product description

DNRX2 Fuse Alarm Impactor, rated voltage AC1000V, it can be directly connected to the fuse link in parallel, when the fuse link is blown, Fuse Alarm Impactor acts at the same time, pushing the micro switch, driving other auxiliary electrical appliances to work, to reminds the operation staff pay attention to it.

Installation

Fuse Alarm Impactor is installed in parallel with the fuse link, it is plug-in type which can be directly inserted into the protrusion of the fuse link cover, as shown in Figure 1. The Screw-connected type Impactor is to adjust the Fuse Alarm Impactor connecting plate to the same height as the cover plates at both ends of the fuse link, loose the screws of the fuse link, insert the connecting plates into the cover plates, and then tight the screws, as shown in Figure 2.

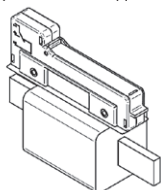


Figure 1, Plug-in Type Fuse Alarm Impactor installation method

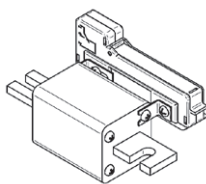


Figure 2, Screw-connected Type Fuse Alarm Impactor installation method

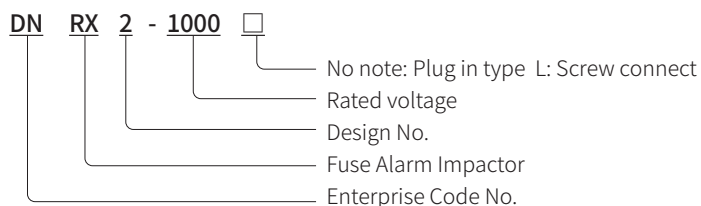
Fuse Alarm Impactor Parameters

Name and Discription	Fuse Alarm Impactor
Rated voltage V	AC1000V
Minium Operating Voltage V	12
Suitable Fuse	DNRX1D-1000

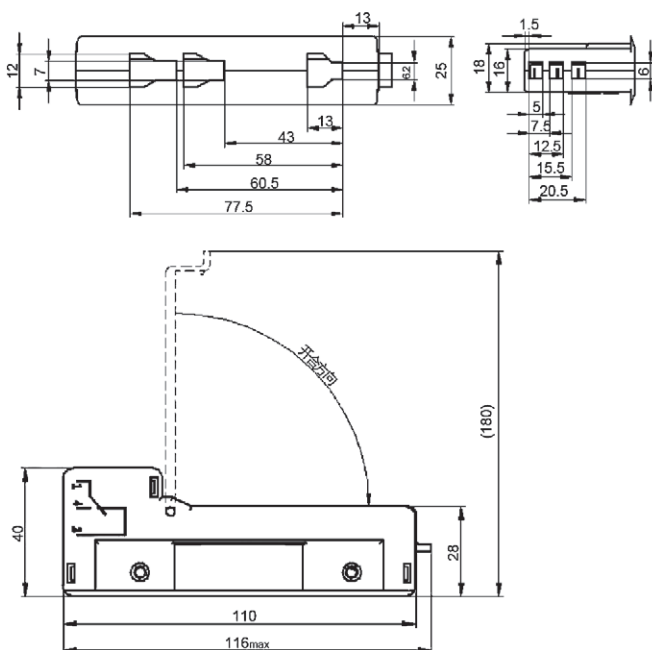
Small Micro Switch Parameters

Rated operational voltage V	250V
Mechanical life (times)	200000
Rated Current A	1
Reference Standard	GB/T 13539

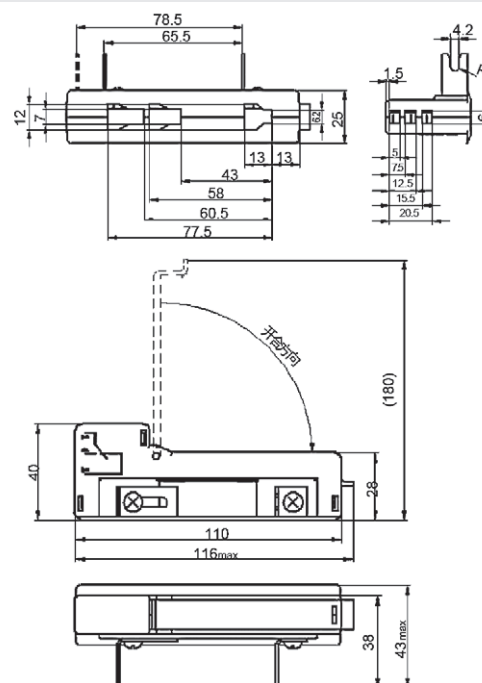
Model No. And Meaning



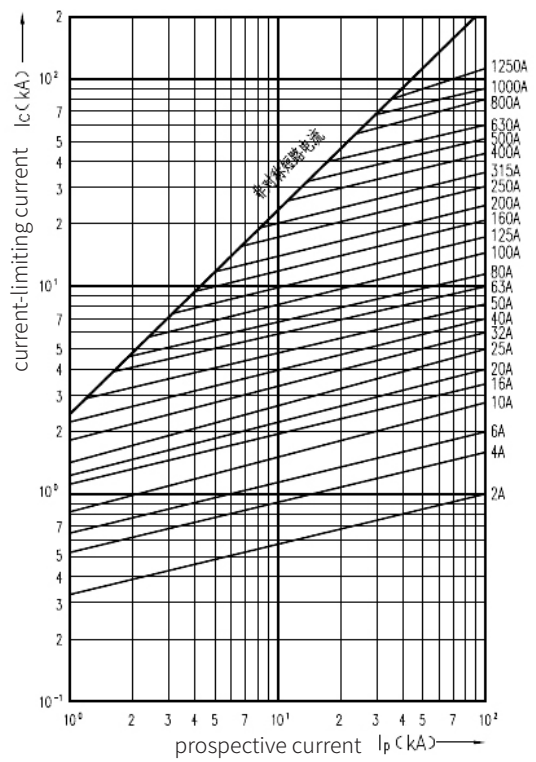
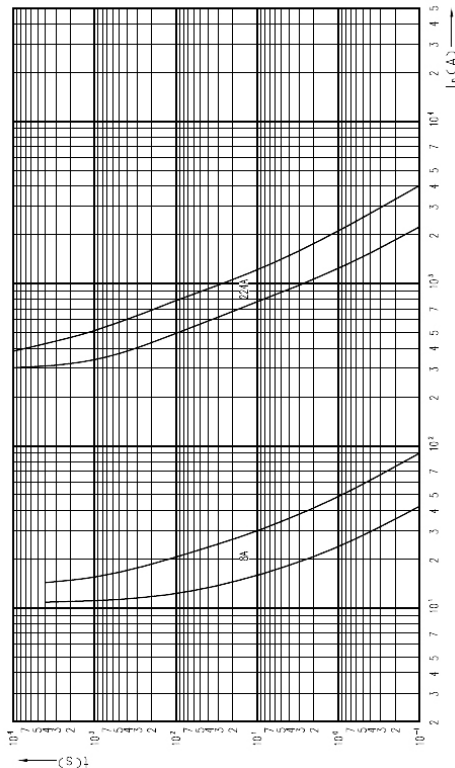
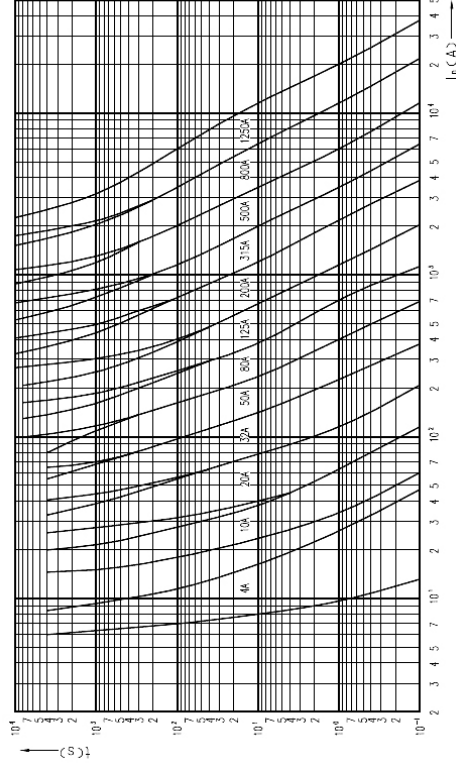
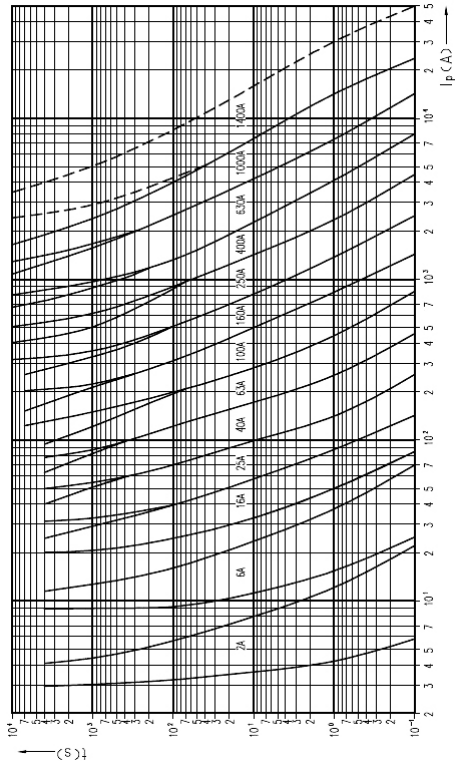
DNRX2-1000 Fuse Alarm Impactor Shape and Installation Dimensions



DNRX2-1000/L Fuse Alarm Impactor Shape and Installation Dimensions

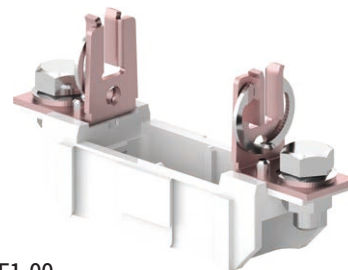


Fuse Curve Chart

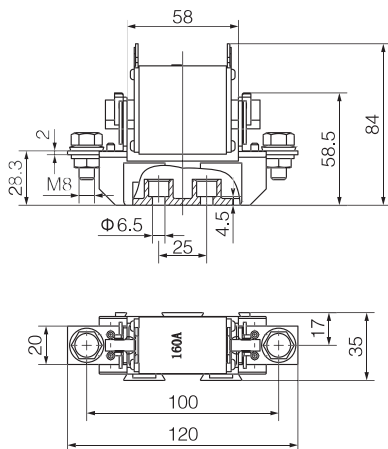


DNF1

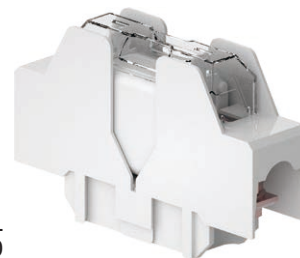
Fuse Holder



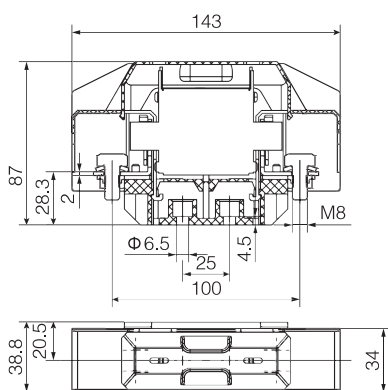
Item No.:DN56300
Product Model:DNF1-00



Rated Current I_n	160A(500VAC,250VDC)/100A(690VAC)
Rated Voltage U_n	500VAC/690VAC/250VDC
Rated Insulation Voltage U_i	690V
Rated Impulse Withstand Voltage U_{imp}	6kV
Breaking Capacity(with Fuse)	120kA(500VAC)/50kA(690VAC)/100kA(250VDC)
Fuse Size	00
Feature	1P, without touch protection device
Type	Fixed Type
Reference standard	IEC 60269-1, IEC 60269-2, GB/T 13539.2



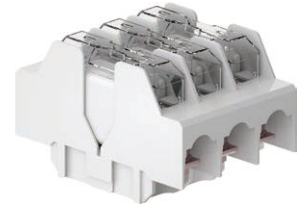
Order No.:DN56301
Model No.:DNF1-00



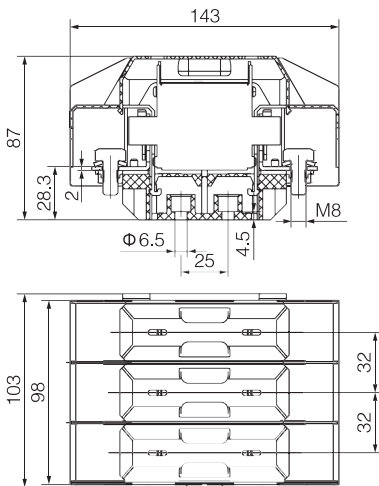
Rated current I_n	160A(500VAC,250VDC)/100A(690VAC)
Rated voltage U_e	500VAC/690VAC/250VDC
Rated Insulation Voltage U_i	690V
Rated impulse withstand voltage U_{imp}	6kV
Break capacity (with fuse link)	120kA(500VAC)/50kA(690VAC)/100kA(250VDC)
Fuse link size	00
Feature	1pole ,with protective cover
Type	Fixed Type
Reference standard	IEC 60269-1, IEC 60269-2, GB/T 13539.2

DNF1

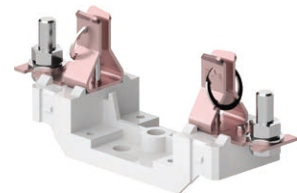
Fuse Holder



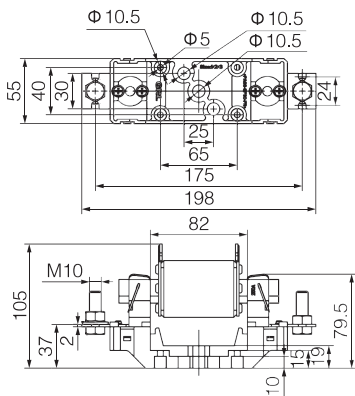
Order No.:DN56302
Model No.:DNF1-00



Rated current I_n	160A(500VAC,250VDC)/100A(690VAC)
Rated voltage U_e	500VAC/690VAC/250VDC
Rated Insulation Voltage U_i	690V
Rated impulse withstand voltage U_{imp}	6kV
Break capacity (with fuse link)	120kA(500VAC)/50kA(690VAC)/100kA(250VDC)
Fuse link size	00
Feature	3 pole, with protective cover
Type	Fixed Type
Reference standard	IEC 60269-1, IEC 60269-2, GB/T 13539.2



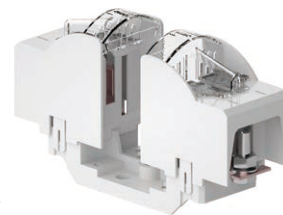
Order No.:DN56310
Model No.:DNF1-1



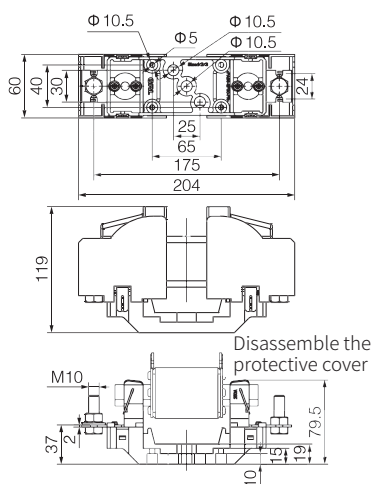
Rated current I_n	250A(500VAC,440VDC)/200A(690VAC)
Rated voltage U_e	500VAC/690VAC/440VDC
Rated Insulation Voltage U_i	690V
Rated impulse withstand voltage U_{imp}	6kV
Break capacity (with fuse link)	120kA(500VAC)/50kA(690VAC)/100kA(440VDC)
Fuse link size	1
Feature	1 pole, without protective cover
Type	Fixed Type
Reference standard	IEC 60269-1, IEC 60269-2, GB/T 13539.2

DNF1

Fuse Holder



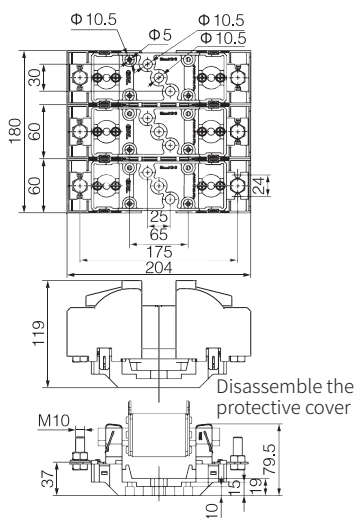
Order No.:DN56311
Model No.:DNF1-1



Rated current I_n	250A(500VAC,440VDC)/200A(690VAC)
Rated voltage U_e	500VAC/690VAC/440VDC
Rated Insulation Voltage U_i	690V
Rated impulse withstand voltage U_{imp}	6 kV
Break capacity (with fuse link)	120kA(500VAC)/50kA(690VAC)/100kA(440VDC)
Fuse link size	1
Feature	1pole ,with protective cover
Type	Fixed Type
Reference standard	IEC 60269-1, IEC 60269-2, GB/T 13539.2



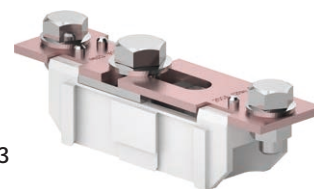
Order No.:DN56312
Model No.:DNF1-1



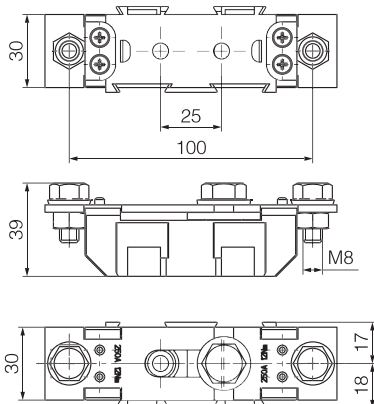
Rated current I_n	250A(500VAC,440VDC)/200A(690VAC)
Rated voltage U_e	500VAC/690VAC/440VDC
Rated Insulation Voltage U_i	690V
Rated impulse withstand voltage U_{imp}	6 kV
Break capacity (with fuse link)	120kA(500VAC)/50kA(690VAC)/100kA(440VDC)
Fuse link size	1
Feature	3 pole, with protective cover
Type	Fixed Type
Reference standard	IEC 60269-1, IEC 60269-2, GB/T 13539.2

DNF1

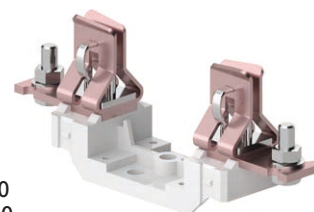
Fuse Holder



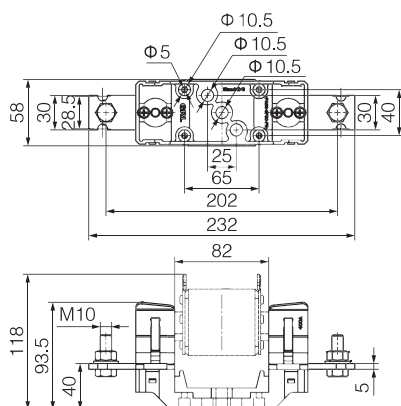
Order No.:DN56313
Model No.:DNF1-1



Rated current I_n	250A(500VAC,440VDC)/200A(690VAC)
Rated voltage U_e	500VAC/690VAC/440VDC
Rated Insulation Voltage U_i	690V
Rated impulse withstand voltage U_{imp}	6 kV
Break capacity (with fuse link)	120kA(500VAC)/50kA(690VAC)/100kA(440VDC)
Fuse	Neutral link ,without fuse link
Feature	break type, without protective cover
Type	Fixed Type
Reference standard	IEC 60269-1, IEC 60269-2, GB/T 13539.2



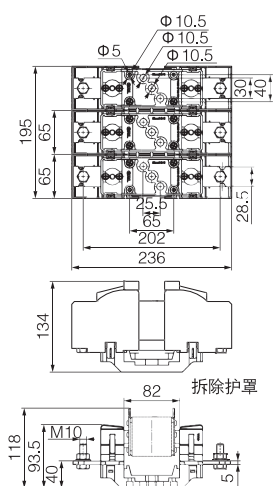
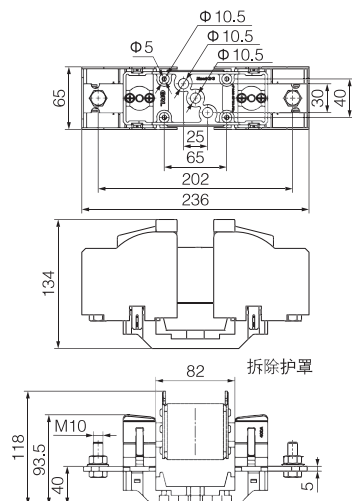
Order No.:DN56320
Model No.:DN56320



Rated current I_n	400A(500VAC,440VDC)/315A(690VAC)
Rated voltage U_e	500VAC/690VAC/440VDC
Rated Insulation Voltage U_i	690V
Rated impulse withstand voltage U_{imp}	6 kV
Break capacity (with fuse link)	120kA(500VAC)/50kA(690VAC)/100kA(440VDC)
Fuse link size	2
Feature	1 pole, without protective cover
Type	Fixed Type
Reference standard	IEC 60269-1, IEC 60269-2, GB/T 13539.2

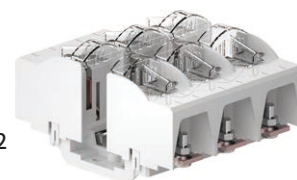
DNF1

Fuse Holder



Order No.:DN56321
Model No.:DNF1-2

Rated current I_n	400A(500VAC,440VDC)/315A(690VAC)
Rated voltage U_e	500VAC/690VAC/440VDC
Rated Insulation Voltage U_i	690V
Rated impulse withstand voltage U_{imp}	6 kV
Break capacity (with fuse link)	120kA(500VAC)/50kA(690VAC)/ 100kA(440VDC)
Fuse link size	2
Feature	1 pole, with protective cover
Type	Fixed Type
Reference standard	IEC 60269-1, IEC 60269-2, GB/T 13539.2

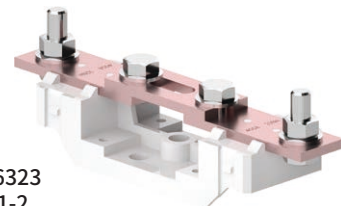
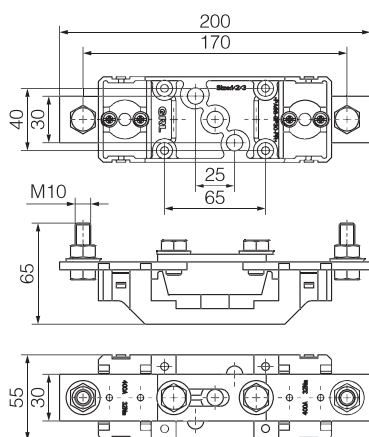


Order No.:DN56322
Model No.:DNF1-2

Rated current I_n	400A(500VAC,440VDC)/315A(690VAC)
Rated voltage U_e	500VAC/690VAC/440VDC
Rated Insulation Voltage U_i	690V
Rated impulse withstand voltage U_{imp}	6 kV
Fuse link size	2
Feature	3 pole, with protective cover
Type	Fixed Type
Reference standard	IEC 60269-1, IEC 60269-2, GB/T 13539.2

DNF1

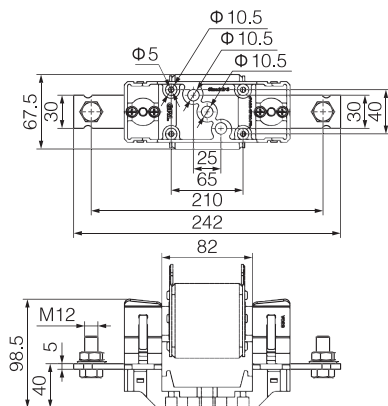
Fuse Holder



Order No.:DN56323

Model No.:DNF1-2

Rated current I_n	400A(500VAC,440VDC)/315A(690VAC)
Rated voltage U_e	500VAC/690VAC/440VDC
Rated Insulation Voltage U_i	690V
Rated impulse withstand voltage U_{imp}	6 kV
Feature	Feature neutral link,break type,without protective cover
Type	Fixed Type
Reference standard	IEC 60269-1, IEC 60269-2, GB/T 13539.2



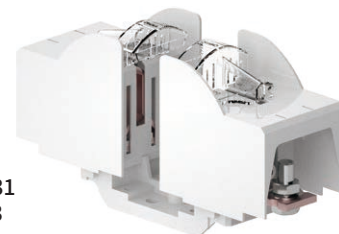
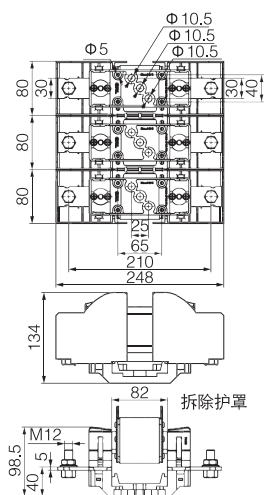
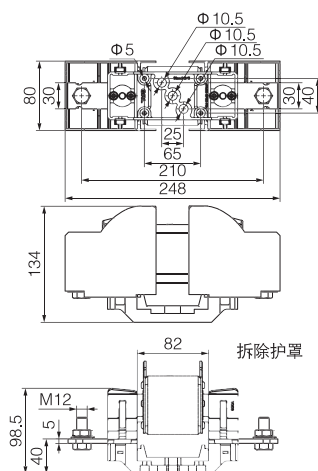
Order No.:DN56330

Model No.:DNF1-3

Rated current I_n	630A(500VAC,440VDC)/500A(690VAC)
Rated voltage U_e	500VAC/690VAC/440VDC
Rated Insulation Voltage U_i	690V
Rated impulse withstand voltage U_{imp}	6 kV
Fuse link size	3
Feature	1 pole, without protective cover
Type	Fixed Type
Reference standard	IEC 60269-1, IEC 60269-2, GB/T 13539.2

DNF1

Fuse Holder



Order No.:DN56331
Model No.:DNF1-3

Rated current I_n	630A(500VAC,440VDC)/500A(690VAC)
Rated voltage U_e	500VAC/690VAC/440VDC
Rated Insulation Voltage U_i	690V
Rated impulse withstand voltage U_{imp}	6 kV
Break capacity (with fuse link)	120kA(500VAC)/50kA(690VAC)/ 100kA(440VDC)
Fuse link size	3
Feature	1 pole, with protective cover
Type	Fixed Type
Reference standard	IEC 60269-1, IEC 60269-2, GB/T 13539.2

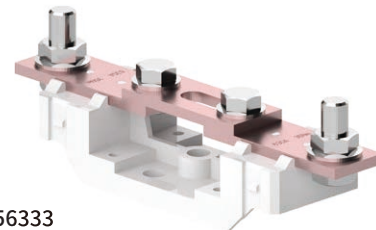


Order No.:DN56332
Model No.:DNF1-3

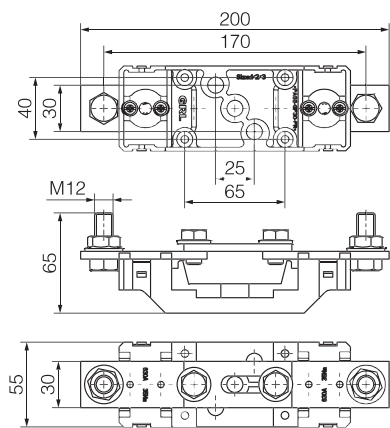
Rated current I_n	630A(500VAC,440VDC)/500A(690VAC)
Rated voltage U_e	500VAC/690VAC/440VDC
Rated Insulation Voltage U_i	690V
Rated impulse withstand voltage U_{imp}	6 kV
Break capacity (with fuse link)	120kA(500VAC)/50kA(690VAC)/ 100kA(440VDC)
Fuse link size	3
Feature	3 pole, with protective cover
Type	Fixed Type
Reference standard	IEC 60269-1, IEC 60269-2, GB/T 13539.2

DNF1

Fuse Holder



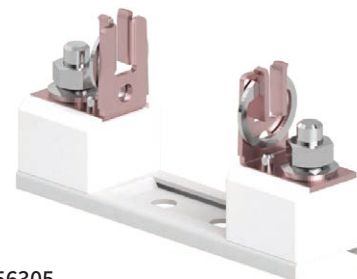
Order No.:DN56333
Model No.:DNF1-3



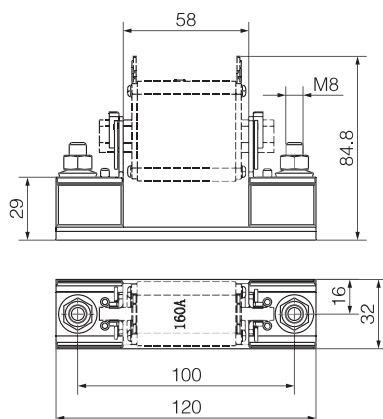
Rated current I_n	630A(500VAC,440VDC)/500A(690VAC)
Rated voltage U_e	500VAC/690VAC/440VDC
Rated Insulation Voltage U_i	690V
Rated impulse withstand voltage U_{imp}	6 kV
Feature	break type,without protective cover
Type	Fixed Type
Reference standard	IEC 60269-1, IEC 60269-2, GB/T 13539.2

DNF2

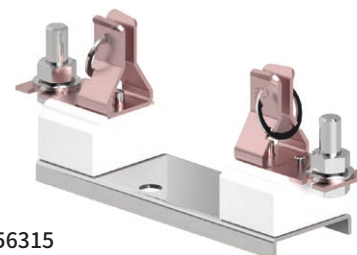
Fuse Holder



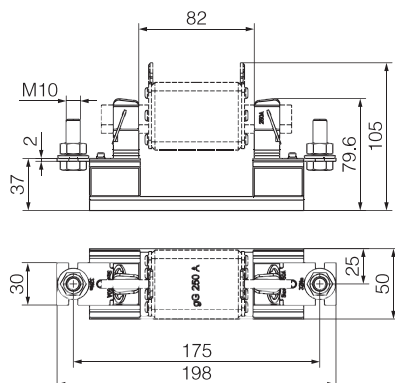
Order No.:DN56305
Model No.:DNF2-00



Rated current I_n	160A(500VAC,250VDC)/100A(690VAC)
Rated voltage U_e	500VAC/690VAC/250VDC
Rated Insulation Voltage U_i	690V
Rated impulse withstand voltage U_{imp}	6 kV
Break capacity (with fuse link)	120kA(500VAC)/50kA(690VAC)/100kA(250VDC)
Fuse link size	00
Feature	1 pole
Type	Fixed Type
Reference standard	IEC 60269-1, IEC 60269-2, GB/T 13539.2



Order No.:DN56315
Model No.:DNF2-1



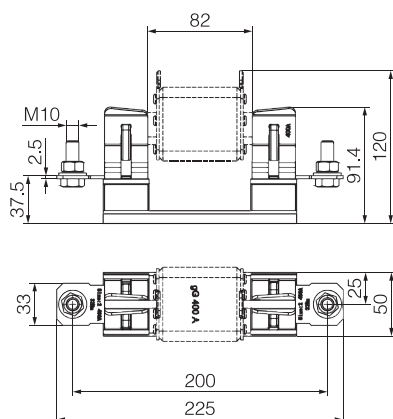
Rated current I_n	250A(500VAC,440VDC)/200A(690VAC)
Rated voltage U_e	500VAC/690VAC/440VDC
Rated Insulation Voltage U_i	690V
Rated impulse withstand voltage U_{imp}	6 kV
Break capacity (with fuse link)	120kA(500VAC)/50kA(690VAC)/100kA(440VDC)
Fuse link size	1
Feature	1 pole
Type	Fixed Type
Reference standard	IEC 60269-1, IEC 60269-2, GB/T 13539.2

DNF2

Fuse Holder



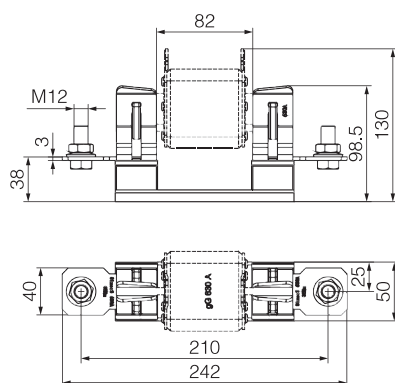
Order No.:DN56325
Model No.:DNF2-2



Rated current I_n	400A(500VAC,440VDC)/315A(690VAC)
Rated voltage U_e	500VAC/690VAC/440VDC
Rated Insulation Voltage U_i	690V
Rated impulse withstand voltage U_{imp}	6 kV
Break capacity (with fuse link)	120kA(500VAC)/50kA(690VAC)/100kA(440VDC)
Fuse link size	2
Feature	1 pole
Type	Fixed Type
Reference standard	IEC 60269-1, IEC 60269-2, GB/T 13539.2



Order No.:DN56335
Model No.:DNF2-3

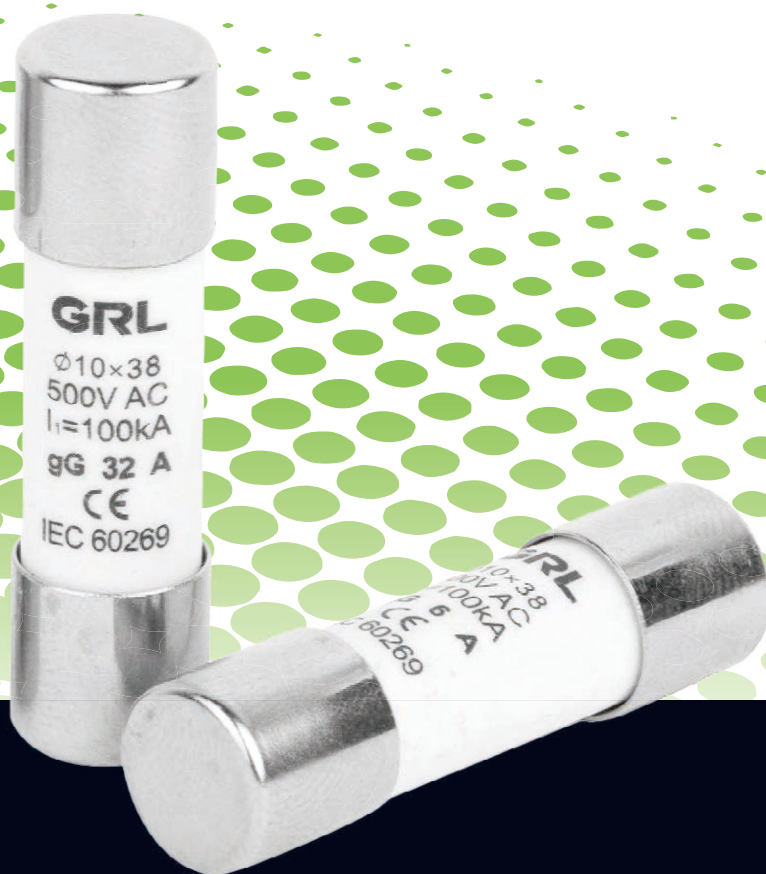


Rated current I_n	630A(500VAC,440VDC)/500A(690VAC)
Rated voltage U_e	500VAC/690VAC/440VDC
Rated Insulation Voltage U_i	690V
Rated impulse withstand voltage U_{imp}	6 kV
Break capacity (with fuse link)	120kA(500VAC)/50kA(690VAC)/100kA(440VDC)
Fuse link size	3
Feature	1 pole
Type	Fixed Type
Reference standard	IEC 60269-1, IEC 60269-2, GB/T 13539.2

Cylindrical fuse link

10×38 / 14×51 / 22×58

2A-125A



Cylindrical Fuse Links

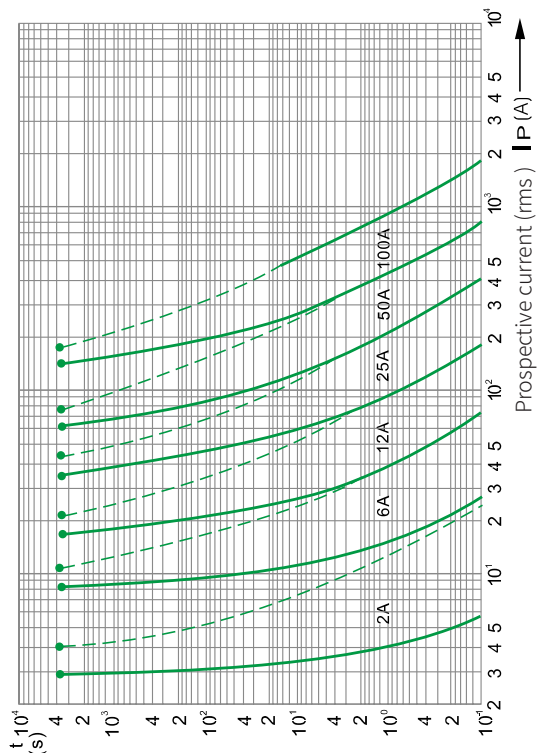


Model No.	Rated Current In	Rated voltage Un	Breaking capacity with fuse
RT18-32(RO15)	In:2A、4A、6A、8A、10A、16A、20A、25A、32A(500VAC);	500VAC/	100kA (500VAC)/
	In: 2A、4A、6A、8A、10A、16A (690VAC)	690VAC	50kA (690VAC)
RT18-63(RO16)	In:2A、4A、6A、8A、10A、12A、16A、20A、25A、32A、40A、50A、63A(500VAC);	500VAC/	100kA (500VAC)/
	In:2A、4A、6A、8A、10A、12A、16A、20A、25A、32A (690VAC)	690VAC	50kA (690VAC)
RT18-125(RO17)	In: 10A、16A、20A、25A、32A、40A、50A、63A、80A、100A、125A (500VAC)	500VAC/	100kA (500VAC)/
	In: 10A、16A、20A、25A、32A、40A、50A (690VAC)	690VAC	50kA (690VAC)

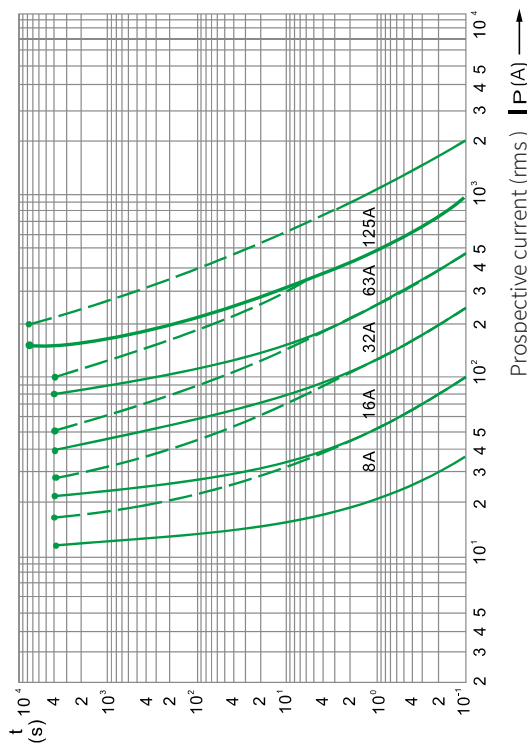
Item	Size	Model No.	Rated voltage	Drawing
Cylindrical cap fuse	10×38mm	RT18-32(RO15)	500V/ 690VAC	
	14×51mm	RT18-63(RO16)	500V/ 690VAC	
	22×58mm	RT18-125(RO17)	500V/ 690VAC	

Cylindrical Fuse Links

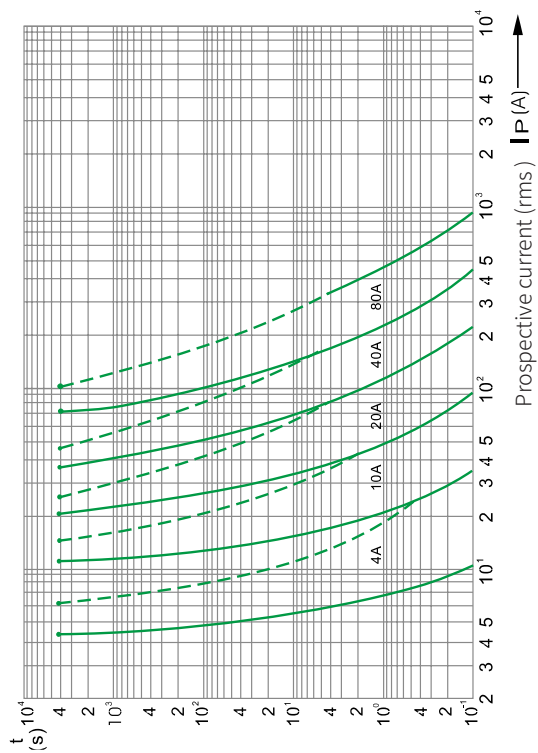
Characteristic Curve



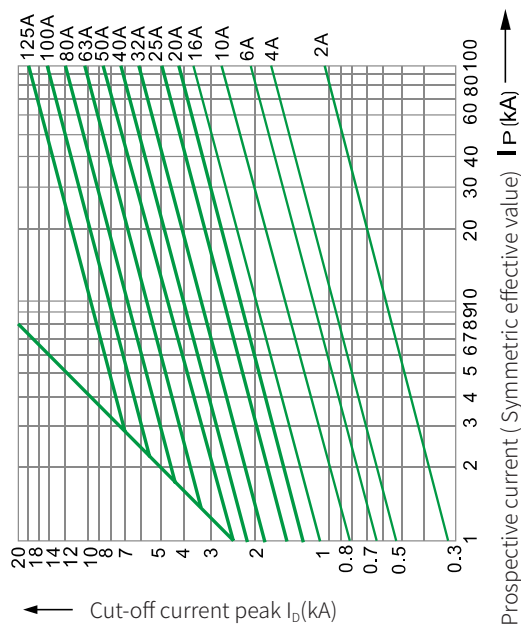
"gG" fuse time-current characteristics



"gG" fuse time-current characteristics



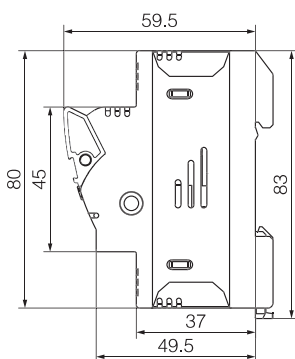
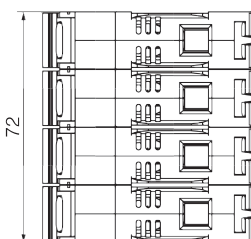
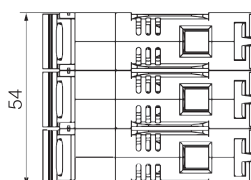
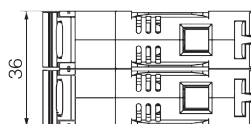
"gG" fuse time-current characteristics



"gG" fuse link cut-off current characteristic curve

RT18

Series Fuse Switch Disconnecter



Technical Parameters

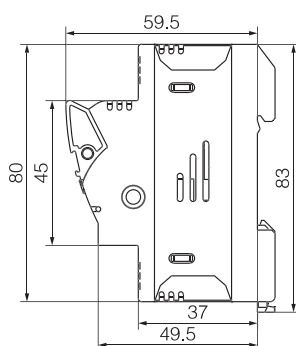
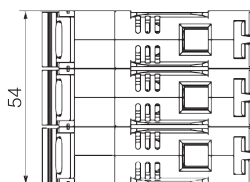
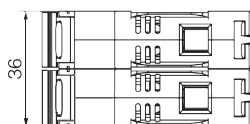
Mounting method	DIN rail installation
Wiring range ²	0.75-25mm ²
Fuse size	10*38
Rated operational current I _e	32A
Rated operational voltage U _e	400V/690V
Rated Insulation Voltage U _i	800V
Rated impulse withstand voltage U _{imp}	6 kV
Breaking capacity with fuse	100kA(500VAC)/50kA(690VAC)
Utilization category	AC-22B
IP Degree	IP20
Reference standard	IEC 60269-2, GB/T 13539.2

Order No.

Pole	Description	Indicator	Order No.
1	without null line	without	DN56110
1+N	with null line at right	without	DN56111
2	without null line	without	DN56112
3	without null line	without	DN56113
3+N	with null line at right	without	DN56114
3+N	with null line at left	without	DN56126

RT18

Series Fuse Switch Disconnecter



Technical Parameters

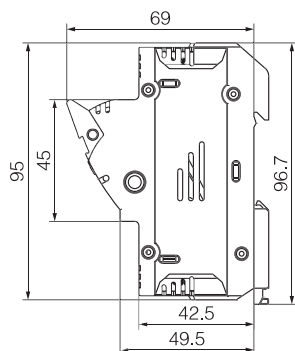
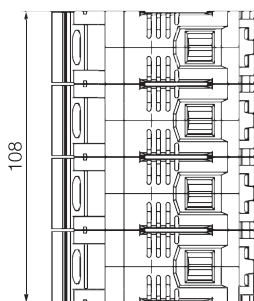
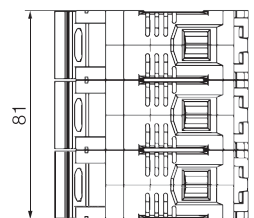
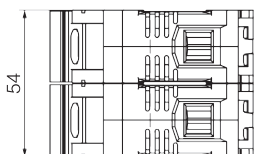
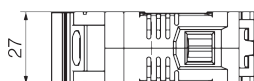
Mounting method	DIN rail installation
Wiring range	0.75-25mm ²
Fuse size	10*38
Rated operational current I _e	32A
Rated operational voltage U _e	400V/690V
Rated Insulation Voltage U _i	800V
Rated impulse withstand voltage U _{imp}	6 kV
Breaking capacity with fuse	100kA(500VAC)/50kA(690VAC)
Utilization category	AC-22B
LED operational voltage range	110 - 690 V AC / DC
IP Degree	IP20
Reference standard	IEC 60269-2, GB/T 13539.2

Order No.

Pole	Description	Indicator	Order No.
1	without null line	with	DN56130
2	without null line	with	DN56132
3	without null line	with	DN56133

RT18

Series Fuse Switch Disconnecter



Technical Parameters

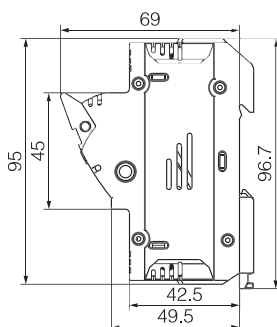
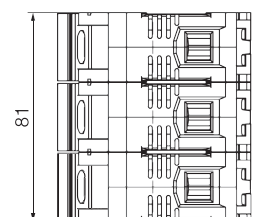
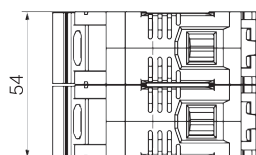
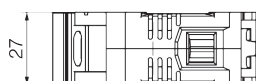
Mounting method	DIN rail installation
Wiring range	1.5-35mm ²
Fuse size	14*51
Rated operational current I _e	63A
Rated operational voltage U _e	400V/690V
Rated Insulation Voltage U _i	800V
Rated impulse withstand voltage U _{imp}	6 kV
Breaking capacity with fuse	100kA(500VAC)/50kA(690VAC)
Utilization category	AC-22B
IP Degree	IP20
Reference standard	IEC 60269-2, GB/T 13539.2

Order No.

Pole	Description	Indicator	Order No.
1	without null line	without	DN56115
1+N	with null line at right	without	DN56116
2	without null line	without	DN56117
3	without null line	without	DN56118
3+N	with null line at right	without	DN56119
3+N	with null line at left	without	DN56168

RT18

Series Fuse Switch Disconnecter



Technical Parameters

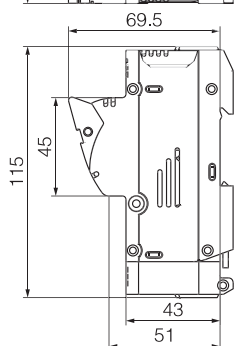
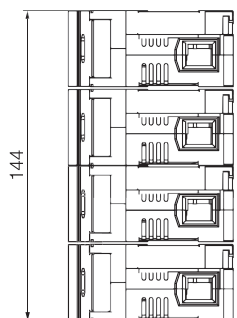
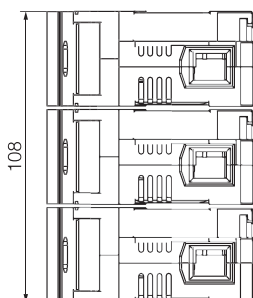
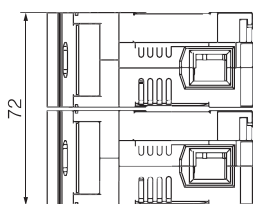
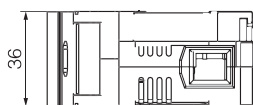
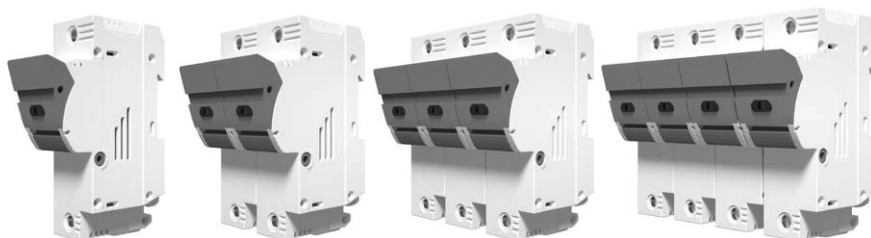
Mounting method	DIN rail installation
Wiring range	1.5-35mm ²
Fuse size	14*51
Rated operational current I _e	63A
Rated operational voltage U _e	400V/690V
Rated Insulation Voltage U _i	800V
Rated impulse withstand voltage U _{imp}	6 kV
Breaking capacity with fuse	100kA(500VAC)/50kA(690VAC)
Utilization category	AC-22B
IP Degree	IP20
Reference standard	IEC 60269-2, GB/T 13539.2

Order No.

Pole	Description	Indicator	Order No.
1	without null line	with	DN56135
2	without null line	with	DN56137
3	without null line	with	DN56138

RT18

Series Fuse Switch Disconnecter



Technical Parameters

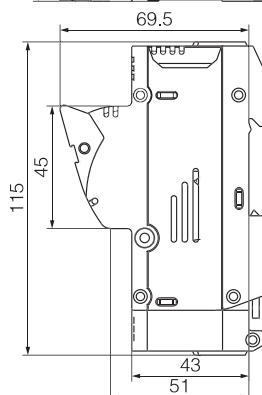
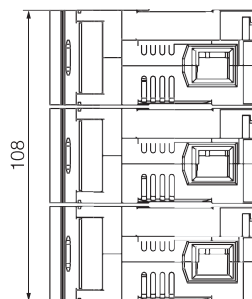
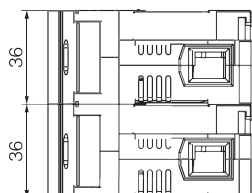
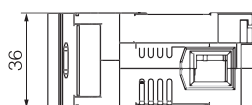
Mounting method	DINrail installation
Wiring range	4-50mm ²
Fuse size	22*58
Rated operational current I _e	125A
Rated operational voltage U _e	400V/690V
Rated Insulation Voltage U _i	800V
Rated impulse withstand voltage U _{imp}	6 kV
Break capacity (with fuse link)	100kA(500VAC)/50kA(690VAC)
Utilization category	AC-20B
IP Degree	IP20
Reference standard	IEC 60269-2, GB/T 13539.2

Order No.

Pole	Description	LED	Order No.
1	without null line	without	DN56120
1+N	with null line at right	without	DN56121
2	without null line	without	DN56122
3	without null line	without	DN56123
3+N	with null line at right	without	DN56124
3+N	with null line at left	without	DN56171

RT18

Series Fuse Switch Disconnecter



Technical Parameters

Mounting method	DIN rail installation
Wiring range	4-50mm ²
Fuse size	22*58
Rated operational current Ie	125A
Rated operational voltage Ue	400V/690V
Rated Insulation Voltage Ui	800V
Rated impulse withstand voltage Uimp	6 kV
Break capacity (with fuse link)	100kA(500VAC)/50kA(690VAC)
Utilization category	AC-20B
IP Degree	IP20
Reference standard	IEC 60269-2, GB/T 13539.2

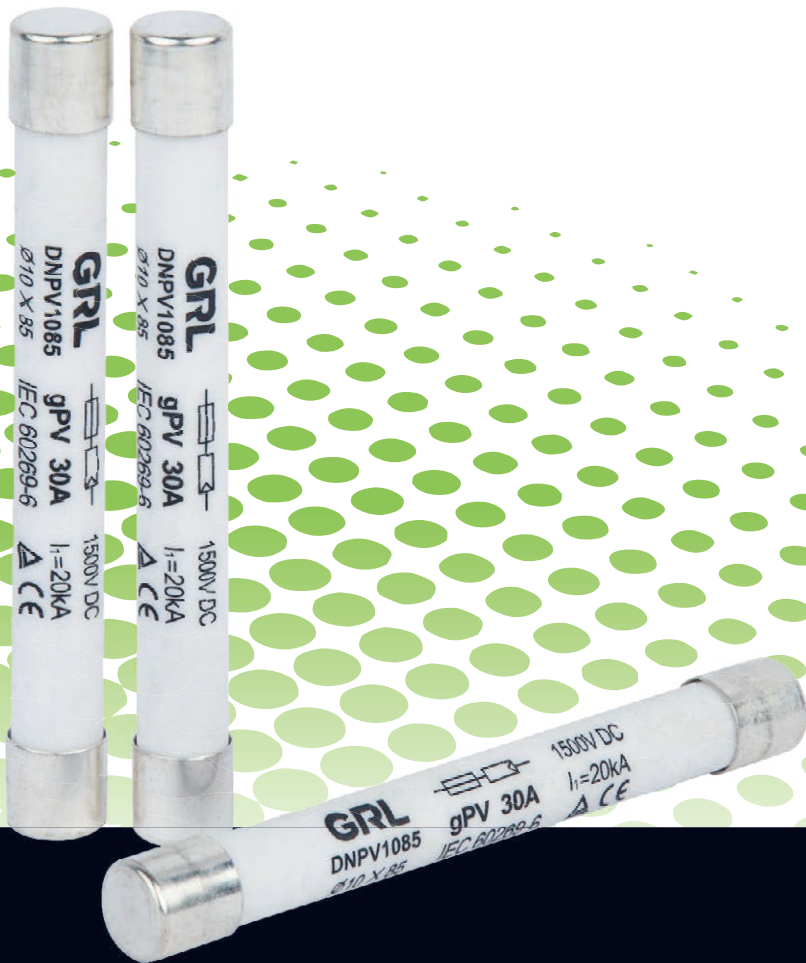
Order No.

Pole	Description	LED	Order No.
1	without null line	带 LED 灯	DN56140
2	without null line	带 LED 灯	DN56141
3	without null line	带 LED 灯	DN56143

Photovoltaic fuse

1000VDC / 1500VDC

2A-125A

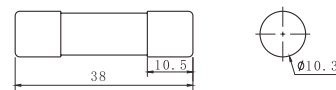


Photovoltaic fuse 1000VDC



Utilization category	gPV
Rated breaking capacity DC	20 kA
Time constant L/R	1-3 ms
(Reference)Standard	IEC 60269-6, GB/T 13539.6

Model No.	Rated operating current I_n	Joule integral I^2T (A ² S)		Power dissipation	
				0.8 I_n	1.0 I_n
DNPV1038	2	1.2	3.3	0.68	1.36
DNPV1038	3	3.9	11	0.75	1.42
DNPV1038	4	10	27	0.94	1.58
DNPV1038	5	18	48	0.98	1.83
DNPV1038	6	31	89	1.10	1.84
DNPV1038	8	3.1	31	1.13	1.86
DNPV1038	10	7.2	68	1.21	2.08
DNPV1038	12	16	136	1.38	2.62
DNPV1038	15	24	215	1.67	2.95
DNPV1038	20	38	392	1.92	3.12
DNPV1038	25	71	508	2.10	3.46
DNPV1038	30	102	821	2.30	3.78

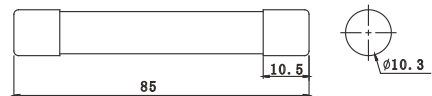


PV(Photovoltaic) Fuse Links 1500VDC



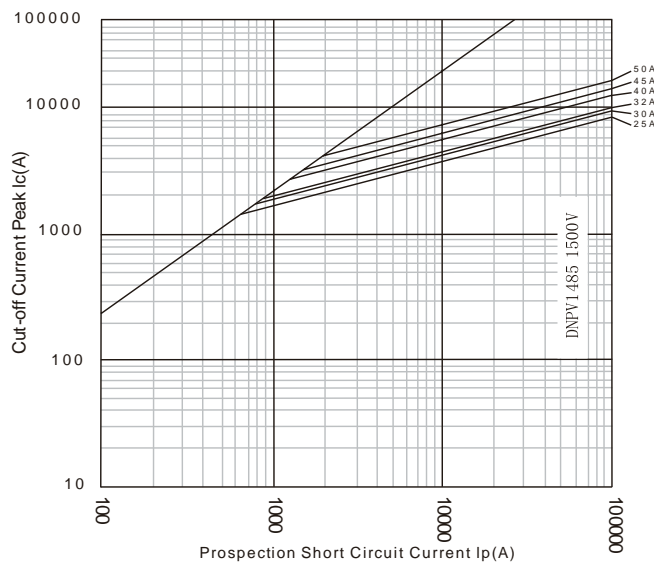
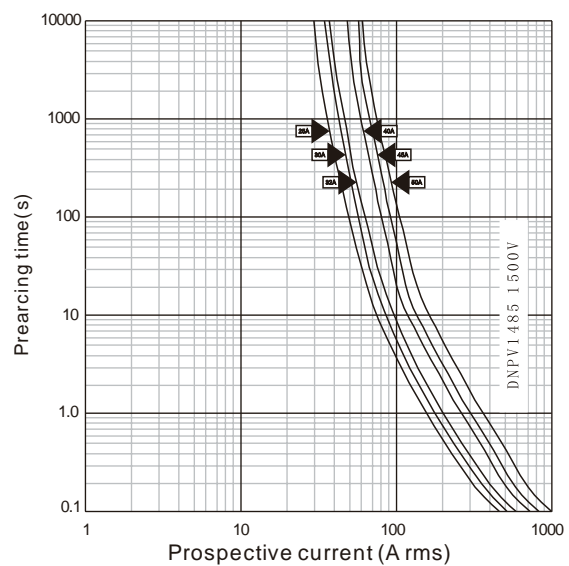
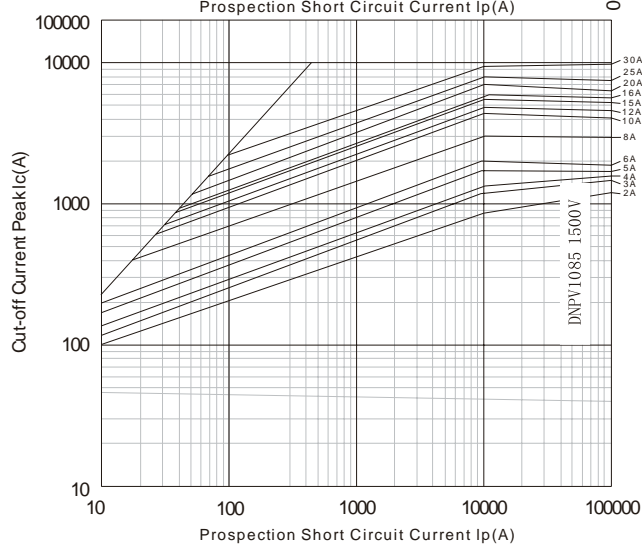
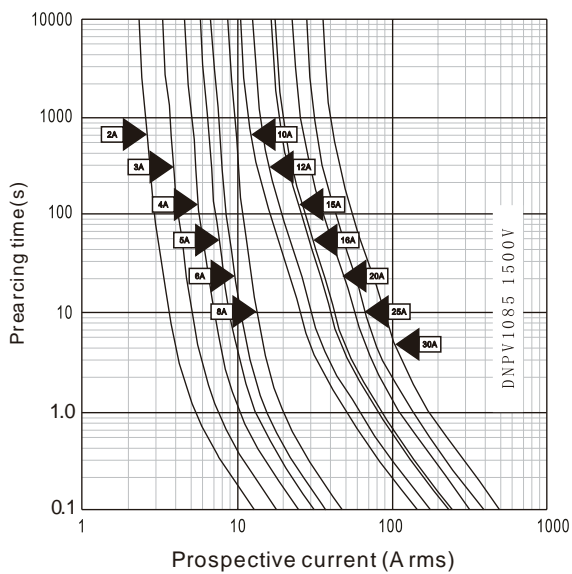
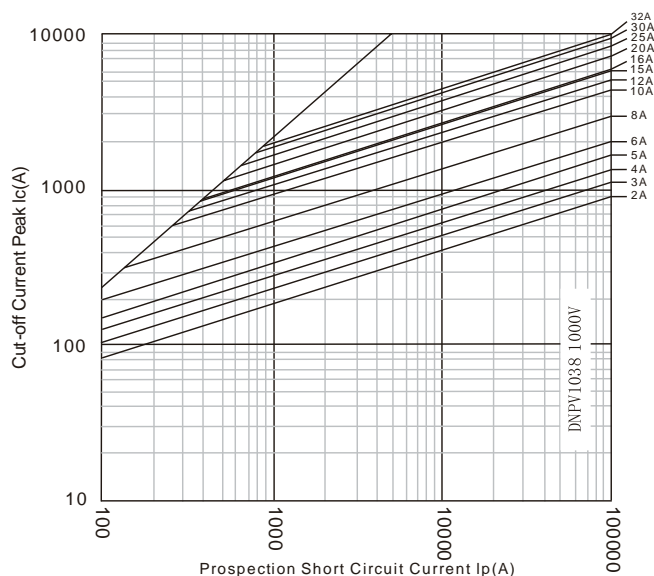
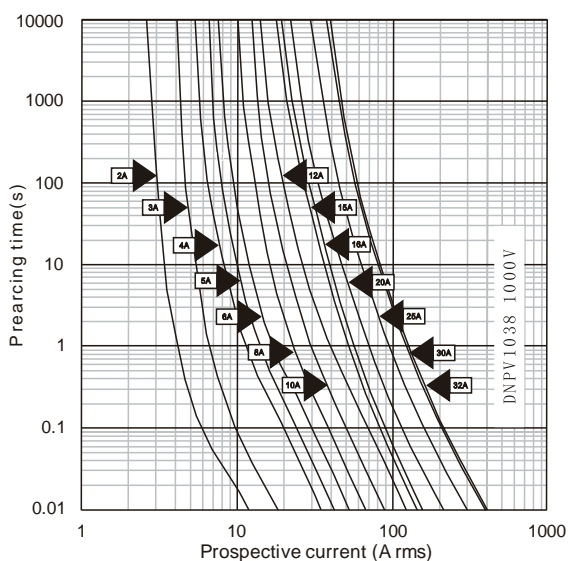
Utilization category	gPV
Rated breaking capacity DC	20 kA
Time constant L/R	1-3 ms
(Reference)Standard	IEC 60269-6, GB/T 13539.6

Model No.	Rated operating current I_n	Joule integral I^2T (A ² S)		Power dissipation	
				0.8 I_n	1.0 I_n
DNPV1085	2	4	8	1.0	2.0
DNPV1085	3	6	11	1.1	2.1
DNPV1085	4	8	14	1.2	2.2
DNPV1085	5	11	22	1.4	2.4
DNPV1085	6	15	30	1.5	2.6
DNPV1085	8	9	35	1.8	3.0
DNPV1085	10	10	98	2.2	3.5
DNPV1085	12	12	120	2.5	3.8
DNPV1085	15	14	170	3.0	4.8
DNPV1085	20	34	400	3.5	6.2
DNPV1085	25	65	550	4.0	7.2



PV(Photovoltaic) Fuse Links

Graph

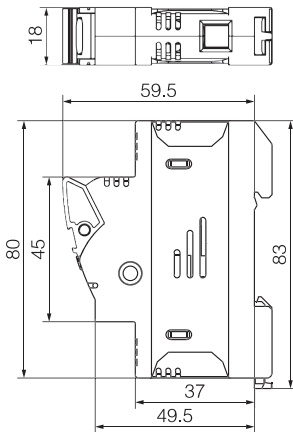


DNPVF1

PV(Photovoltaic) Fuse Holders (Disconnectors) Series



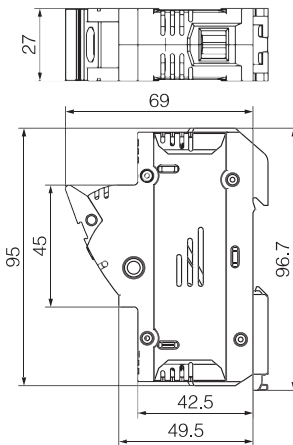
Order No.:DN56401
Model No.:DNPVF1-32



Name and Description	PV(Photovoltaic) Fuse Holders(Disconnectors)
Pole	1 pole
Mounting method	DIN rail installation
Conductor area	0.75-25mm ²
Fuse link size	10*38
Rated operational current I_e	32A
Rated operational voltage U_e	DC1000V
Rated Insulation Voltage U_i	1000V
Rated impulse withstand voltage U_{imp}	6 kV
Breaking capacity with fuse	20kA
Utilization category	DC-PV0
Degree of protection	IP20
(Reference)Standard	IEC 60947-3, GB/T14048.3



Order No.:DN56411
Model No.:DNPVF1-63



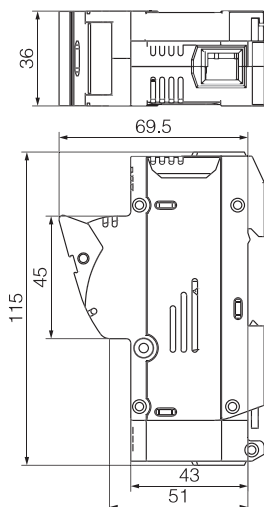
Name and Description	PV(Photovoltaic) Fuse Holders(Disconnectors)
Pole	1 pole
Mounting method	DIN rail installation
Conductor area	1.5-35mm ²
Fuse link size	14*51
Rated operational current I_e	50A
Rated operational voltage U_e	DC1000V
Rated Insulation Voltage U_i	1000V
Rated impulse withstand voltage U_{imp}	6 kV
Breaking capacity with fuse	20kA
Utilization category	DC-PV0
Degree of protection	IP20
(Reference)Standard	IEC 60947-3, GB/T14048.3

DNPVF1

PV(Photovoltaic) Fuse Holders (Disconnectors) Series



Order No.:DN56421
Model No.:DNPVF1-125



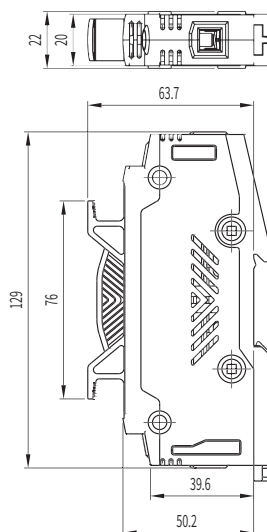
Name and Discription	PV(Photovoltaic) Fuse Holders(Disconnectors)
Pole	1 pole
Mounting method	DIN rail installation
Conductor area	0.75-25mm ²
Fuse link size	10*38
Rated operational current I _e	50A
Rated operational voltage U _e	DC1000V
Rated Insulation Voltage U _i	1000V
Rated impulse withstand voltage U _{imp}	6 kV
Breaking capacity with fuse	20kA
Utilization category	DC-PV0
Degree of protection	IP20
(Reference)Standard	IEC 60947-3, GB/T14048.3

DNPVF1-32L

PV(Photovoltaic) Fuse Holders



Order No.:DN56432
Model No.:DNPVF1-32L







Name and Discription	PV(Photovoltaic) Fuse Holders
Pole	1 pole
Mounting method	DIN rail installation
Conductor area	0.75-25mm ²
Fuse link size	10*85/14*85 mm
Rated operational current I _e	30A
Rated operational voltage U _e	DC1500V
Rated Insulation Voltage U _i	1500V
Rated impulse withstand voltage U _{imp}	8 kV
Breaking capacity with fuse	20kA
Utilization category	DC-PV0
Degree of protection	IP20
(Reference)Standard	IEC 60947-3, GB/T14048.3



ZHEJIANG GRL ELECTRIC CO.,LTD.

No.246.Weishi Road,Yueqing Economic Development Zone,Yueqing City,
Zhejiang,China.

Tel: 0577-62700791 Fax: 0577-62702791

 Sales Hot-line: 0577-62698877  Website: www.grlele.com
 Technical Support: 400-926-1791  E-mail: scb@grlele.com

G22F11



网站



公众号

This product manual is printed by GRL,It is only used to explain the relevant information of this series of products.The information might be updated base on the technical upgrade or update, GRL holds the right to update the manual without prior notice. Welcome to contact GRL for more details.

GRL Electric All Rights Reserved.